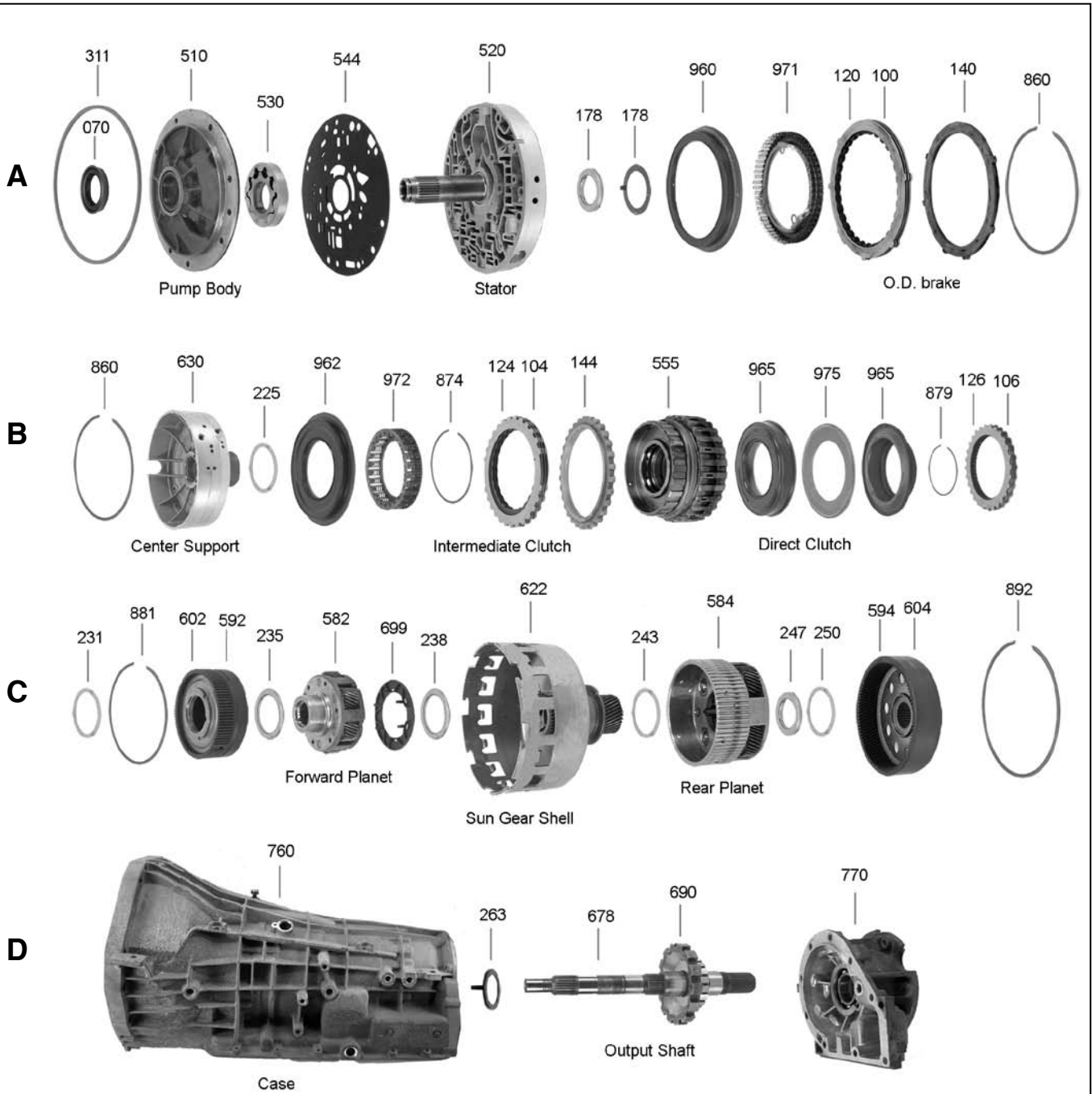
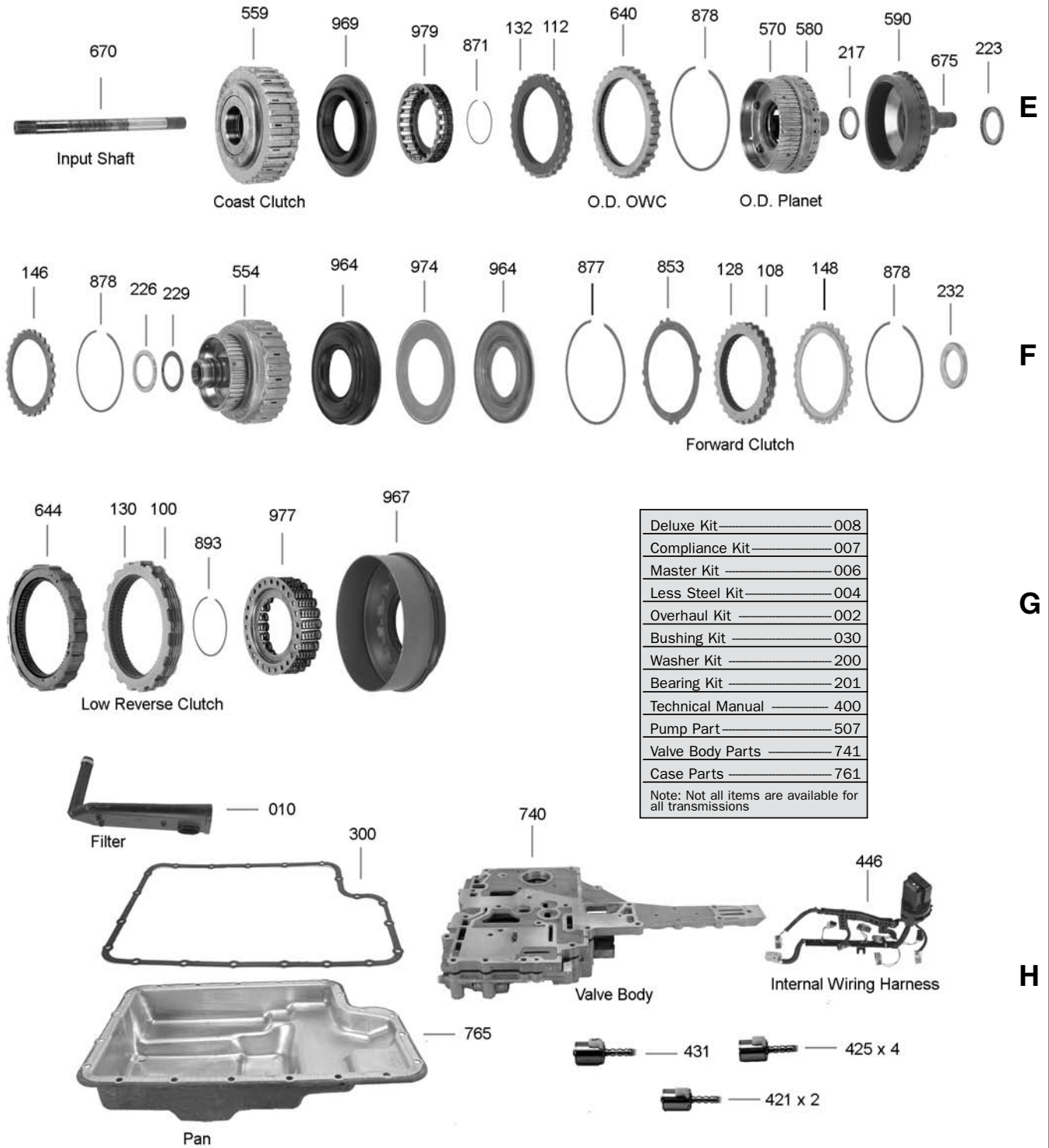


# FORD 5R110W TORQUESHIFT



# FORD 5R110W TORQUESHIFT

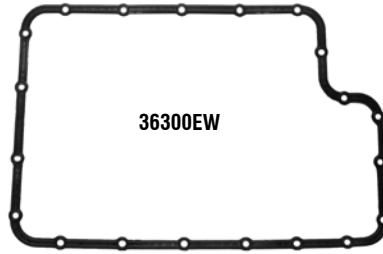


# FORD 5R110W TORQUESHIFT

16010



16010 (SIDE VIEW)



36300EW

5R110W (03-Up)

Truck w/ 6.0L Diesel

ILL.	DESCRIPTION	QTY.	YEAR	PART NO.	REFERENCE NO.
<b>MASTER OVERHAUL KITS (WITH STEELS)</b>					
006	5R110W (w/ Pistons) .....	1	03-04	16006	K7300P
006	5R110W (w/ Pistons) .....	1	05-Up	16006A	K7300T
<b>LESS STEEL KITS</b>					
004	5R110W (w/ Pistons) .....	1	03-04	16004	K7300P-LS
004	5R110W (w/ Pistons) .....	1	05-Up	16004A	K7300T-LS
<b>OVERHAUL KITS (W/ RINGS &amp; SEALS)</b>					
002	5R110W (w/ Pistons) (OHK does not include 16074A 4wd Rear Seal) .....	1	03-Up	16002	N/A
002	5R110W (w/o Pistons) (OHK does not include 16074A 4wd Rear Seal) .....	1	03-Up	16002A	K73900P
<b>FILTER KITS</b>					
011	Filter Kit .....	1	03-Up	16011	K73800M
<b>FILTERS</b>					
010	Filter .....	1	03-Up	16010	73800M
016	Filter, Cooler Element (OEM Style).....	1	03-Up	16013	73711
016	Filter, Cooler Element (SPX Style).....	1	03-Up	16013A	73711S
016	Screen & Gasket, Solenoid .....	1	03-Up	16016	73713P
<b>BUSHINGS</b>					
030	Bushing Kit .....	1	03-Up	16030	K73905P
034	Front Pump .....	1	03-Up	76034	73002
<b>METAL CLAD SEALS</b>					
070	Front.....	1	03-Up	16070	73601P
072	Manual Lever Seal.....	1	03-Up	36072	6507A
074	Rear (2wd) (Slip Yoke) .....	1	03-Up	16074	73695P
074	Rear (4wd) (Bolt-on Yoke).....	1	03-Up	16074A	73695R
<b>FRICTION PLATES</b>					
100	Overdrive (Can use 36100EA) .....	3	03-Up	16100A	73604P
100	Overdrive (Can use 16100A) .....	3	03-Up	36100EA	73604A
104	Intermediate (24 T) .....	3	03-04	16104	73204P
104	Intermediate (96 T) .....	4	05-Up	16104A	73204T
106	Direct.....	4	03-Up	16106	73304P
108	Forward (90 T).....	4	03-04	16108	73404P
108	Forward (76 T).....	4	05-Up	16108A	73404T
110	Low/ Reverse (Can use 36110).....	6	03-Up	16110A	73504P
110	Low/ Reverse (Can use 16110A).....	6	03-Up	36110	36504A
112	Coast.....	3	03-Up	16112	73104P

# FORD 5R110W TORQUESHIFT

ILL.	DESCRIPTION	QTY.	YEAR	PART NO.	REFERENCE NO.
<b>STEEL PLATES</b>					
120	Overdrive .....	3	03-Up	36120	73605P
124	Intermediate (.125") .....	4	03-04	16124	73205P
124	Intermediate (.115") .....	4	05-Up	16124A	73205T
126	Direct (5.120" ID) .....	4	03-Up	16126	73305P
128	Forward (5.120" ID) .....	4	03-04	16126	73305P
128	Forward (5.374" ID) .....	4	05-Up	16128	73305T
130	Low/ Reverse .....	6	03-Up	36130	36505
132	Coast .....	3	03-Up	16132	73105P
<b>PRESSURE PLATES</b>					
<b>Prefix Key: D = OEM, A = Aftermarket New, R = Remanufactured</b>					
140	Overdrive (w/o PTO) .....	1	03-Up	36140C	N/A
140	Overdrive (Flat) (w/ PTO) .....	1	03-Up	36140B	73714G
140	Overdrive (Beveled) (w/ PTO) .....	1	03-Up	16140	N/A
144	Intermediate (29 T) (.350") .....	1	05-Up	16144B	N/A
144	Intermediate (29 T) (.550") .....	1	05-Up	16144A	N/A
144	Intermediate (30 T) (.525") .....	1	03-04	16144	N/A
146	Direct (5.120" ID) .....	1	03-04	16146	73714P
148	Forward (5.120" ID) .....	1	03-04	16146	73714P
148	Forward (5.375" ID) .....	1	05-Up	16148	73714T
640	Coast w/ One Way Clutch .....	1	03-04	16640	73940P-R
640	Coast w/ One Way Clutch (Gas) (32 T / 57 T) .....	1	05-Up	16640A	73940T
640	Coast w/ One Way Clutch (Diesel) (32 T / 59 T) .....	1	07-Up	16640B	73940S
654	Low/ Reverse w/ One Way Clutch (6 Element) .....	1	03-Up	16642	73960P
654	Low/ Reverse w/ One Way Clutch (12 Element) .....	1	03-Up	16642A	73960S
<b>VALVE BODY RECALIBRATION KITS</b>					
165	Shift Kit® 5R110W (Transgo®) .....	1	03-Up	T16165	K73908P
<b>THRUST WASHERS</b>					
200	Thrust Washer Kit .....	1	03-04	16200	K73907P
200	Thrust Washer Kit .....	1	05-Up	16200A	K73907T
235	Forward Planet .....	1	03-04	36235EA	73402P
235	Forward Planet .....	1	05-Up	36235EB	73402T
<b>GASKETS &amp; O-RINGS</b>					
300	Pan Gasket .....	1	03-Up	36300EW	13890R
310	Pump Gasket .....	1	03-Up	16310	13889D
310	Pump O-Ring .....	1	03-Up	36311E	13888
320	Gasket, Valve Body (White Stripe) .....	1	03-07	16320	N/A
322	Gasket, Valve Body Support Plate .....	1	03-Up	16322	N/A
<b>TECHNICAL MANUALS</b>					
400	Tech Manual .....	1	03-Up	16400	73Y05
400	Tech Manual, Ford 5R110W Rebuild Procedures .....	1	03-Up	16400A	N/A
<b>ELECTRICAL COMPONENTS</b>					
411	Switch, Fluid Pressure (Non Functional) .....	5	03-Up	16411	15A-510
421	Solenoid, Direct, Coast .....	2	03-Up	16421	5A-511A
425	Solenoid, TCC, Intermediate, Overdrive, Low Reverse .....	4	03-Up	16425	5A-511
431	Solenoid, EPC .....	1	03-Up	16431	5A-510
436	Sensor, Output (VSS) .....	1	03-Up	16436	20A-510B
437	Sensor, Fluid Temp .....	1	03-Up	16437	20A-512
438	Sensor, Input (TSS) .....	1	03-Up	16438	20A-510
446	Wire Harness w/ Connector (Internal) .....	1	03-Up	16446	25A-510

# FORD 5R110W TORQUESHIFT

ILL.	DESCRIPTION	QTY.	YEAR	PART NO.	REFERENCE NO.
<b>HARD PARTS</b>					
Prefix Key: D = OEM, A = Aftermarket New, R = Remanufactured					
<b>PUMPS</b>					
500	Pump (OE 03-Up) .....	1	03-Up	D16500	73200T
500	Pump (Reman) .....	1	03-04	16500	73200P-R
500	Pump (Reman) .....	1	05-Up	16500A	73200T-R
507	Valve & Sleeve, TCC Control.....	1	03-Up	16507C	K73882P
<b>DRUMS &amp; CLUTCH HUBS</b>					
554	Forward (2.20" Front Ring Gear Hub Bore).....	1	03-04	16554	73927P
554	Forward (2.40" Front Ring Gear Hub Bore).....	1	05-Up	16554A	73927T
555	Direct (24 T Hub) .....	1	03-04	16555	73935P
555	Direct (96 T Hub) .....	1	05-Up	16555A	73935T
559	Coast Clutch Kit (Drum w/ OWC Only) (OE 03-Up).....	1	03-06	16559K	73925P
559	Coast Clutch Kit (Loaded) (OE 07-Up) Retros 03-Up.....	1	07-Up	16559BK	N/A
559	Coast (w/ Groove in 32 T Sun Gear) (Reman).....	1	03-04	16559	73925P-R
559	Coast (w/o Groove in 32 T Sun Gear) (Reman).....	1	05-06	16559A	73925T-R
559	Coast (41 T Sun Gear) .....	1	07-Up	16559B	N/A
570	Coast Clutch Hub (w/o PTO) .....	1	03-Up	16570	73942P
570	Coast Clutch Hub (w/ PTO) .....	1	03-Up	16570A	73942S
<b>PLANETS</b>					
580	Overdrive (28 T).....	1	03-06	16580	73950P
580	Overdrive (29 T).....	1	07-Up	16580A	N/A
582	Front (18 T Pinion) (6 Tab Washer).....	1	03-Up	16582	73939P
582	Front (23 T Pinion) (6 Tab Washer).....	1	03-Up	16582A	N/A
582	Front (23 T Pinion) (4 Tab Washer).....	1	05-Up	16582B	73939T
583	Geartrain, Front & Rear Planet, Shell, Ring Gear, Hub .....	1	03-Up	16583A	K73939T
584	Rear (OE 03-Up) .....	1	03-Up	D16584	73937P
584	Rear (1.925" Rev Clutch Hub Ring Gear Bore) .....	1	03-04	16584	73937P-R
584	Rear (1.800" Rev Clutch Hub Ring Gear Bore) .....	1	05-Up	16584A	73937T-R
590	Ring Gear, Overdrive Planet (94 T).....	1	03-06	16590	73949P
590	Ring Gear, Overdrive Planet (99 T).....	1	07-Up	16590A	N/A
592	Ring Gear, Front Planet (78 T) (90 T Friction).....	1	03-04	36592B	73955
592	Ring Gear, Front Planet (101 T) (76 T Friction).....	1	05-Up	16592A	73955T
592	Ring Gear & Hub Kit, Front Planet (101 T) (76 T Friction) .....	1	05-Up	16592AK	N/A
594	Ring Gear, Rear Planet.....	1	03-Up	16594	73945P
602	Hub, Front Ring Gear (78 T) .....	1	03-04	16602	73954P
602	Hub, Front Ring Gear (101 T) .....	1	05-Up	16602A	73954T
604	Hub, Rear Ring Gear .....	1	03-Up	16604	73944P
<b>SUN GEARS, SHELLS &amp; SUPPORTS</b>					
610	Sun Gear, Overdrive (32 T) (w/ Groove).....	1	03-04	16610	73948P
610	Sun Gear, Overdrive (32 T) (w/o Groove).....	1	05-06	16610A	73948T
610	Sun Gear, Overdrive (41 T).....	1	07-Up	16610B	N/A
622	Sun Gear & Shell Kit (42 T Sun Gear) .....	1	03-04	16622K	73974P
622	Sun Gear & Shell Kit (55 T Sun Gear) .....	1	05-Up	16622AK	73974T
630	Center Support.....	1	03-Up	16630	73956P
<b>SPRAGS</b>					
640	Pressure Plate w/ One Way Clutch (Coast).....	1	03-04	16640	73940P-R
640	Pressure Plate w/ One Way Clutch (Coast) (Gas) (32 T / 57 T).....	1	05-Up	16640A	73940T
640	Pressure Plate w/ One Way Clutch (Coast) (Diesel) (32 T / 59 T) .....	1	07-Up	16640B	73940S
654	Pressure Plate w/ One Way Clutch (Low/ Reverse) (6 Element).....	1	03-Up	16642	73960P
654	Pressure Plate w/ One Way Clutch (Low/ Reverse) (12 Element).....	1	03-Up	16642A	73960S

# FORD 5R110W TORQUESHIFT

ILL.	DESCRIPTION	QTY.	YEAR	PART NO.	REFERENCE NO.
<b>SHAFTS</b>					
670	Input .....	1	03-Up	16674	73970P
675	Overdrive (94 T) .....	1	03-06	16675	N/A
675	Overdrive (99 T) .....	1	07-Up	16675A	N/A
678	Output (2wd) .....	1	03-Up	16678	N/A
678	Output (4wd) .....	1	03-Up	16678A	N/A
<b>VALVE BODIES</b>					
740	Valve Body (Pressure Switches Not Required) .....	1	03-07	16740	N/A
<b>CASES &amp; HOUSINGS</b>					
760	Case (w/o PTO) .....	1	03-Up	16760	N/A
760	Case (w/ PTO) .....	1	03-Up	16760A	N/A
765	Pan .....	1	03-Up	16765	N/A
770	Extension Housing (2wd) .....	1	03-Up	16770	N/A
770	Extension Housing (4wd) .....	1	03-Up	16770A	N/A
<b>MISCELLANEOUS COMPONENTS</b>					
795	Nut, Output Shaft (Uses T-9008 Socket) .....	1	03-Up	16795	73919P
853	Cushion Plate, Forward Clutch (5.120") .....	1	03-04	16853	73420P
853	Cushion Plate, Forward Clutch (5.375") .....	1	05-Up	16853A	73420T
885	Snap Ring, Low Reverse Waved (Gas) .....	1	03-Up	16885	73987G
885	Snap Ring, Low Reverse Flat (Diesel) .....	1	03-Up	16885A	73987D
960	Piston, Overdrive (Bonded Piston) .....	1	03-Up	16960	73527P
962	Piston, Intermediate (Bonded Piston) .....	1	03-Up	16962	73531P
964	Piston, Forward (Bonded Piston) .....	1	03-Up	16964	73532P
964	Piston, Forward Balance (Bonded Piston) .....	1	03-Up	16964A	73533P
965	Piston, Direct (Bonded Piston) .....	1	03-Up	16965	73534P
965	Piston, Direct Balance (Bonded Piston) .....	1	03-Up	16965A	73535P
967	Piston, Low/ Reverse (Bonded Piston) .....	1	03-Up	16967	73536P
969	Piston, Coast (Bonded Piston) .....	1	03-Up	16969	73530P
971	Spring & Retainer Assembly, Overdrive .....	1	03-Up	16971K	N/A
972	Spring & Retainer Assembly, Intermediate .....	1	03-Up	16972K	N/A
974	Belleville Spring, Forward .....	1	03-Up	16974	73419P
975	Belleville Spring, Direct .....	1	03-Up	16975	N/A
976	Spring & Retainer Assembly, Reverse (No Dimple) .....	1	03-04	16976K	N/A
976	Spring & Retainer Assembly, Reverse (6 Dimples) .....	1	05-Up	16976AK	N/A
979	Spring & Retainer Assembly, Coast .....	1	03-Up	16979K	N/A
991	Linkage Assembly .....	1	03-Up	16991	N/A
Tool	Socket, Output Nut (4 Pin) .....	1	03-Up	T-9008	T-9008
<b>NOTES</b>					

5R110W