



I started by removing the core support boxing just above the frame mount. I used a plasma-cutter to remove the unneeded boxing (much better than a torch, less heat). Don't forget to cut holes for the air ports to go through.



I took a piece of 1"x 2" tube and drilled a 1" hole in for the base of the intercooler to sit in. This sits right next to the bracket for the frame mount.



This picture shows the grommet of the base of the intercooler sitting in the 1" hole.



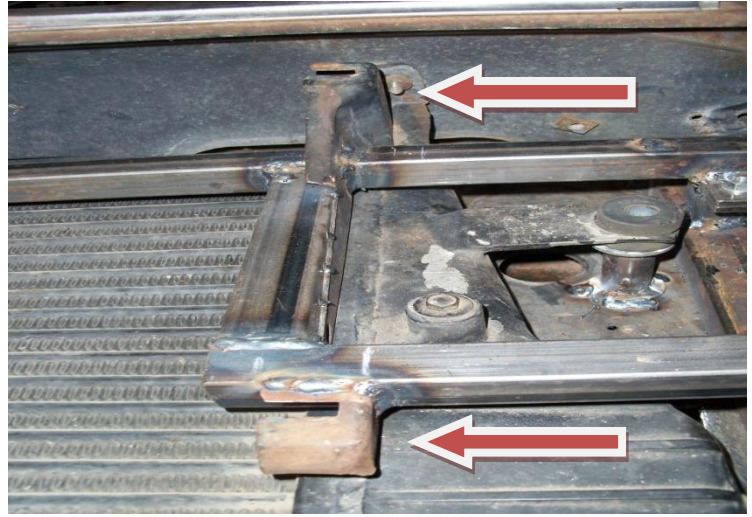
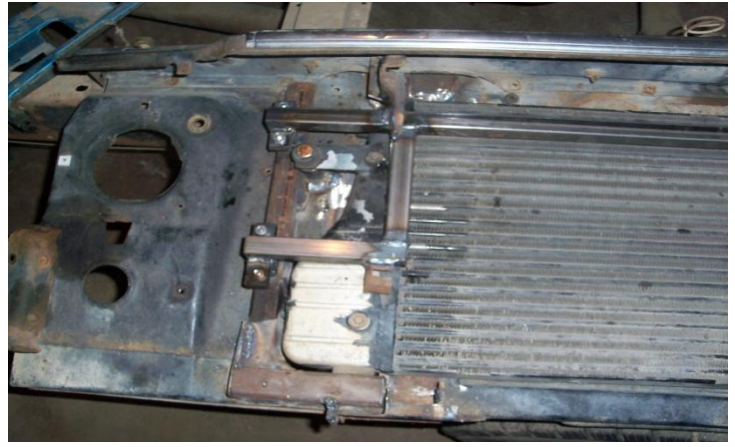
I attached a piece of 1" x 1" square tubing to add support for the boxing I removed. I also bolted the mounts on the tubing for the framing I constructed to hold the grill.



I didn't want to use pins on the hood so I took the hood support bracket and cut the bottom off of it and constructed a new base that would bolt into the original location. I used 3/16" x 1" strap to make it. I had the intercooler sitting in-place when I was fabricating so I could make I had proper clearance. I used my backup core support to get the measurement correct for the grill to sit properly in place.







Red arrows: This is the factory bracket used to support the top portion of the core support where the hood closes. The bracket originally bolted to the boxing I removed to make room for the intercooler. I fabricated it so I could weld it to the square tubing bracket that will provide the upper support for the hood shelf and to have the mount location for the original grill.



This is a little spacer I made using a piece of round tubing and a 1/2" flat washer welded on each end. I then used a 1/2" x 4 1/2" bolt to secure the top of the intercooler.